



FOR LEASE
5,226 SF



LAKES EDGE | 100% AIR-CONDITIONED FLEX SPACE

9035 NW 13th Terrace | Doral | FL | 33172

TOTAL SF	+/- 5,226 SF
OFFICE SF	+/- 2,000 SF
LOADING	1 Street Level Door
CEILING HEIGHT	20' Clear
LEASE RATE	\$22.00 PSF NNN
OPEX	\$7.00 PSF

- 100% Air Conditioned
- Completely Renovated
- Easy Access to Dolphin & Palmetto Exwy.
- Access to Numerous Doral Amenities
- Ideally Situated in the Doral Finger Lakes

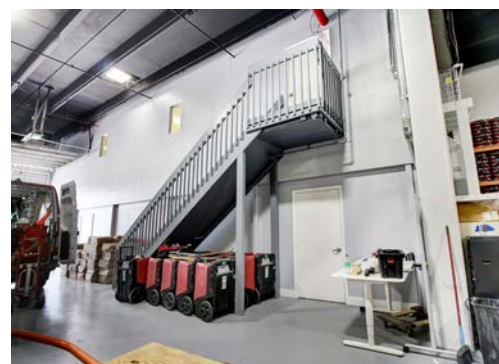
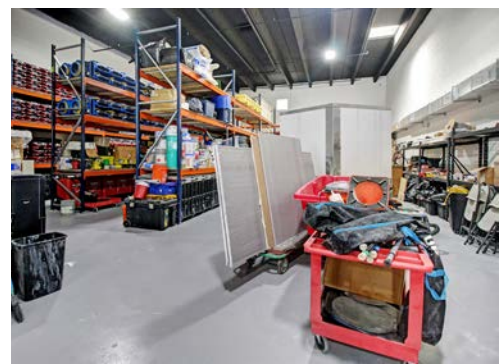
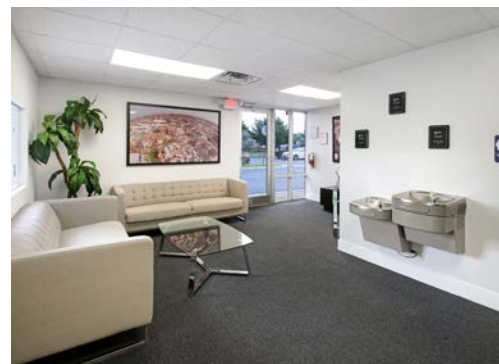
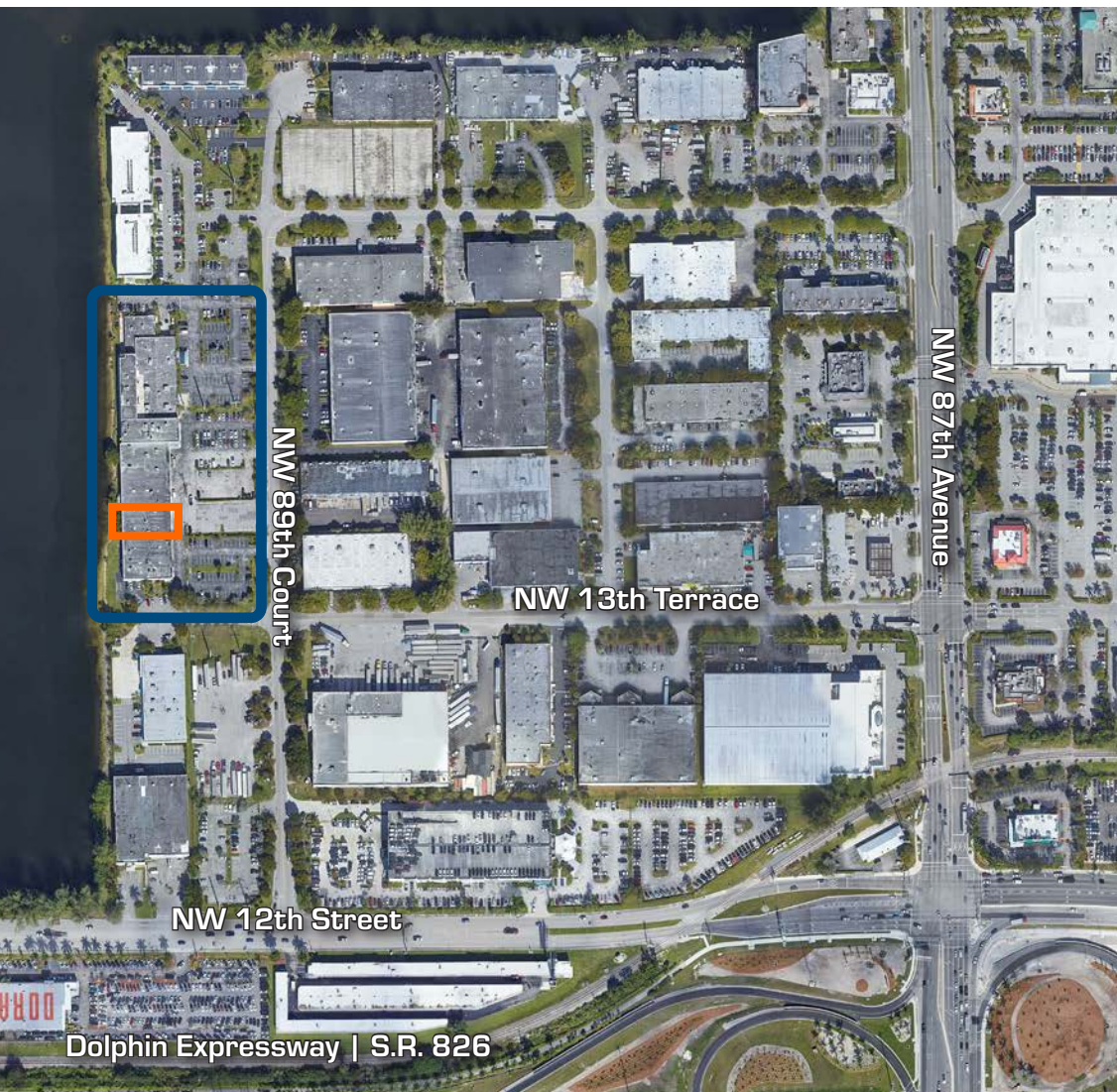


CONTACT: 305 591 3606

Ernesto Casal
ecasal@casal.com

Roger Lopez
rlopez@casal.com

CASAL.COM



CONTACT: 305 591 3606

Ernesto Casal
 ecasal@casal.com

Roger Lopez
 rlopez@casal.com

CASAL.COM